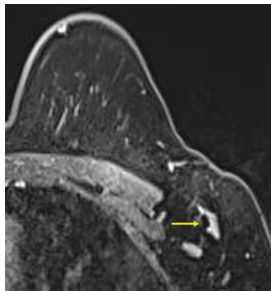


# SCOUT<sup>®</sup> REPORT

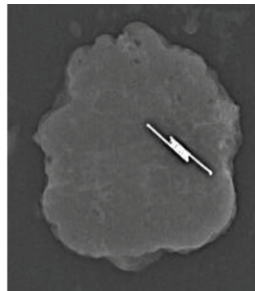


News and Views on Surgical Guidance  
and Breast Tumor Localization

## Clinical Research Continues to Expand Across the Globe



*MRI axial T1-weighted, gradient echo, volumetric-interpolated examination, fat-saturated, post-contrast axial image: The reflector (arrow) was inserted in a metastatic left axillary node. It appears as a thickened linear hypointense object without significant blooming artifact. It did not obscure visibility of the underlying node.*



*Specimen radiograph of harvested sentinel lymph node confirmed retrieval of the SAVI SCOUT<sup>®</sup> reflector which is a 12mm implantable, nonradioactive and infrared-activated electromagnetic wave reflector localised using a handheld probe.*

Clinical research and sharing clinical experiences play an important role in expanding the SCOUT utilization of wire-free localization across the globe. We are proud to share a poster, *Early Experience of Ultrasound Guided Deployment of SAVI SCOUT<sup>®</sup> in Targeted Axillary Dissection for Breast Cancer in Singapore* recently presented at the 3rd Congress of Asian Surgical Ultrasound Society. This study of the use of SCOUT in Targeted Axillary Dissection depicts the first ever use in Asia at Singapore General Hospital and Mount Elizabeth Medical Centre.

With localization challenges for Targeted Axilla Dissection (TAD), this poster

demonstrated the reliability and advantages of SAVI SCOUT in TAD which overcomes challenges associated with other modalities and wire-free approaches.



VIEW POSTER

---

## Educational Opportunity

---

THINK **WIRE-FREE™**

### **Post-COVID Strategies to Optimize Breast Cancer Care: A Patient-Centered Model**

We remain committed to providing you with virtual education in 2021 and January's event was compelling:

**HOSTED BY:** American Society of Breast Surgeons

**TOPIC:** Post-COVID Strategies to Optimize Breast Cancer Care: A Patient-Centered Model

Advocate Health's Barry Rosen, MD, and Memorial Healthcare's Mary Hayes, MD, will review how they uniquely employ SCOUT® Radar Localization throughout the patient care continuum to achieve safe, streamlined, patient-centered care, particularly during COVID-imposed challenges. The discussion will include:

- Cost and clinical advantages derived from going Wire-Free
- Reducing patient facility visits through localizing with SCOUT at biopsy & data review
- Clinical utility of SCOUT for Mastectomy and Oncoplastic approaches



---

## Coming Soon: The SCOUT Cart!

---



OR space can be limited and equipment placement a challenge, but no more.

**COMING SOON—the SCOUT cart. Watch for more information on our latest innovation to help you create better outcomes for your patients.**



## **Have Questions?**

Do you want more information about SCOUT and how it was designed to make the day of breast cancer surgery easier for women and more efficient for healthcare providers? Send us a note.

**EMAIL US AT [alisoviejoinfo@merit.com](mailto:alisoviejoinfo@merit.com)**



Merit Medical Systems, Inc.  
1600 West Merit Parkway  
South Jordan, Utah 84095  
Main: +1.801.253.1600  
Customer Service: +1.801.208.4300

Merit Medical Europe, Middle  
East, & Africa (EMEA)  
Amerikalaan 42, 6199 AE  
Maastricht-Airport  
The Netherlands  
+31 43 358 82 22

Merit Medical Ireland Ltd.  
Parkmore Business Park West  
Galway, Ireland  
+353 (0) 91 703 733